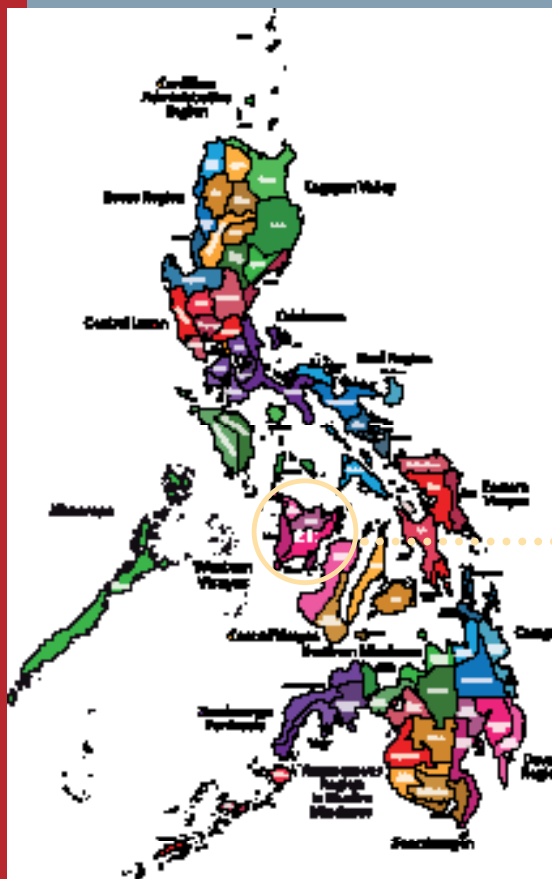


GIVE COLORS

TO THEIR FUTURE

# CONTENTS

Key datas about the Philippines .....	3
CAMELEON Association in nutshell .....	4
Sponsorship in CAMELEON .....	5
Setting-up of your sponsorship step-by-step .....	8
Fiscal advantages .....	9
Relationship with your sponsored child .....	10
Exchanging letters .....	12
Sending gifts .....	16
Visit your sponsored child: Travel to the Philippines .....	18
Testimonials .....	22
Sponsors quotes .....	22
Child testimonials .....	24
End of the sponsorship .....	25
You have questions ? .....	28
REGISTRATION : Sponsorship Form .....	29



## 4 good reasons to sponsor through CAMELEON



To reach out to a child in need:  
By sponsoring, you provide an underprivileged child with the opportunity to build their future.



To work extensively against misery and poverty: With education, children become adult catalysts of change in their families, communities, and country.



To engage in the defense and respect of children's rights: CAMELEON actively stimulates the population and local authorities with the goal of preventing sexual violence and abuse.



To open up one's self to the world and to solidarity: Sponsorship is a source of enrichment and exchange as much for your sponsored child as for you and your family.

68,7  
years old



## LIFE EXPECTANCY



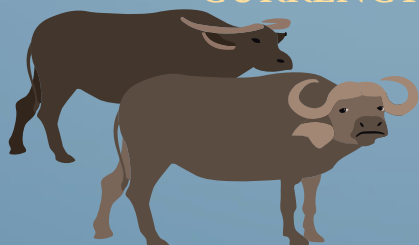
Catholics: 84%  
Muslims: 7%  
Evangelical  
protestants: 4%  
Buddhists: 1,5%

## RELIGIONS



Philippine peso  
1 euro ± 50 pesos

## CURRENCY



Tagalog-flippino  
English

## OFFICIAL LANGUAGES



June 12

## NATIONAL DAY



287,8  
billions USD  
(source: FMI)

## GDP (2014)

Sources : diplomatie.gouv.fr

94,9  
millions



## POPULATION



7 107 with  
2000 habited

## NUMBER OF ISLANDS



300 000  
km²

## AREA



95,4 %

## LITERACY



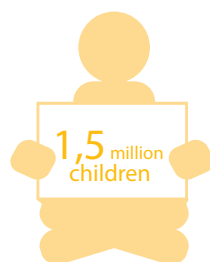
CAMELEON association is located in the VI area of the  
Philippines, on the island of Panay, in the Western Visayas



## KEY DATAS



1/3  
of the population  
is younger than 14 years  
old



are uneducated  
and live on the  
streets



28  
children are  
imprisoned  
every day



95%  
of the Filipinos children  
go to  
primary school

Coût de la scolarité  
à l'université



30%  
of people aged or over  
25 have diplomas in  
higher education

In 1990, the Philippines established the International Convention on Children's Rights and adopted laws on the protection and promotion of human rights. However, despite a legislative environment in favour of these laws, their implementation has experienced delays and remains unevenly enforced. There is an urgency to put these preventive and protective measures in place. This is what CAMELEON has done for 17 years in the province of Iloilo, on the island of Panay, in the Western Visayas, in the Philippines.

## FOR A SOCIETY WHERE CHILDREN GROW UP IN DIGNITY AND WHERE THEIR RIGHTS ARE RESPECTED



CAMELEON is a recognized international association that assists with the goal of helping abused and disadvantaged children and their families.

Since 1997, thanks to the support of our **1,200 sponsors** and our donors, we have accompanied **5,000 children and their families** towards autonomy.

The association works towards:

- ☒ The protection, rehabilitation and reintegration of children who are victims of sexual abuse, as well as social support to their families.
- ☒ The education, health, professional integration, and independence for disadvantaged teenagers and their families.
- ☒ Raising awareness on children's rights and the prevention of mistreatment and sexual abuse among the general public, decision-makers, politicians, and the media.

“ Le caméléon change de couleur pour s'adapter à son environnement. Nous aidons les enfants à se transformer physiquement et moralement, en passant de l'exclusion à un avenir meilleur. ”

Laurence Ligier, Director Founder of CAMELEON

## OUR AREAS OF WORK



### EDUCATION

School and university support to ensure an education for and an adequate training for young girls who have been victims of abuse as well as underprivileged children from surrounding village communities.



### HEALTH & THERAPY

Medical check-ups for all children, psychological support and therapeutic activities for young female victims of sexual abuse, educating about hygiene, and sex-education.



### FAMILIAL SUPPORT

Education on parenthood, workshops on child-parent relationships, follow-up meetings.



### AUTONOMY

Professional training for the children and their parents. Support for the development of revenue-generating micro-projects and the job search.



### CHILDREN'S RIGHTS

Defense of children's rights with their families, raising awareness and advocating throughout the media, teachers, and local authorities.





# SPONSORSHIP THROUGH CAMELEON

## DO YOU THINK THAT EVERY CHILD DESERVES A FUTURE?

Do you wish to supply the basic needs for a child born in a country where 47.5% of the population lives off 1.52€/ day and create a strong relationship with them ?

## BECOME A CAMELEON SPONSOR!

Individual sponsorship is one of our specialities. Since 1997, **900** children, for the most part still in our programs, have been enrolled in school thanks to sponsorships. Among them, **282** have already obtained a university diploma.

Your sponsorship will help an underprivileged child to grow and flourish, and you will offer them an opportunity to build a better future.

The child you sponsor receives a mark of trust and irreplaceable attention up until they become autonomous. They feel encouraged and acknowledged.

An **authentic and personal bond** is formed slowly but surely between you and the child, through an exchange of letters and pictures and even a visit should you desire!



## INDIVIDUAL SPONSORSHIP

Sponsoring... to offer better opportunities to child victims of abuse or poverty.

It is an arrangement which allows the development of a durable relationship with your sponsored child. You help them to grow up thanks to medical, educational, emotional, and moral support. You provide them with the opportunity to build a better future, THEIR FUTURE.

You accompany your sponsored child while they learn to read, write, and count, express themselves, promote their self-confidence and deal with their environment (drinking water management, tree planting, hygiene and health rules, etc.). Throughout the years, you allow them to become an independent adult able to participate to their village and community development.

## 2 TYPES OF SPONSORSHIP

### SPONSORING A CHILD/TEENAGE GIRL FROM THE REHABILITATION PROGRAM:

- ☒ She is between 5-24 years old and had been referred to CAMELEON by Social Services.
- ☒ She lives in our centre in Passi (see the map below), with her family, or in a student dormitory.
- ☒ Elle est soutenue par 1 à 3 parrains / marraines jusqu'à la fin de ses études.

Le parrainage participe au processus de reconstruction car la jeune fille trouve, auprès de son parrain / sa marraine une personne bienveillante qui la motive pour aller au bout de ses études et qui l'aide à prendre confiance en ses capacités.



### SPONSORING A TEENAGE GIRL/BOY FROM THE COMMUNITY DEVELOPMENT PROGRAM:

- ☒ They are between 10-24 years old and come from underprivileged families from villages not far from our centres (Passi, Bingawan or San Enrique see maps below) and their parents' monthly salary ranges from 15€ to 90€.
- ☒ They have very good marks at school and go to the same schools as the young girls from the rehabilitation program.
- ☒ They have one sponsor until graduation and benefit, as well as their family, from the medical and social services provided by CAMELEON.

The association organises seminars and lectures to raise awareness about child abuse and children rights in those communities.

Their parents contribute to the funding of their studies: CAMELEON asks families to contribute up to 30% of the costs associated with the education of the child. It's important to involve them in their child's education and make them aware of their responsibilities.

☒ Passi – Bingawan :

☒ 30 km ☒ 1h

☒ Passi – San Enrique :

☒ 5 km ☒ 30 min

☒ Passi – Iloilo :

☒ 60 km ☒ 1h30



# EDUCATIONAL SPONSORSHIP: A RECIPROCATED ENGAGEMENT

On the one hand, the child promises to consciously study, on the other hand, the sponsor provides material support all throughout the education of the child.

This support allows them to pay for tuition, transportation, uniforms, and school supplies as well as their extra-curricular activities and medical check-ups.

CAMELEON equally accompanies their families to help them develop their new sources of income.

In addition to financial assistance, the lasting bond between sponsors and their child is promoted by the exchange of letters, drawings, school newsletters, and small gifts.

☒ The average age of our beneficiaries is 16 years old

☒ The sponsorship of a child could sometimes take a few weeks

## LENGHT OF SPONSORSHIP

☒ The minimum commitment for sponsorship is **two years**.

☒ Ideally, the sponsorship could extend until the end of the child's education and the acquisition of a diploma in higher education (between 5-10 years)

Being a university graduate will allow your child to access a qualified, well-paid job and help their family.

If you must stop your sponsorship, please let us know as soon as possible for us to seek another sponsor.

## CONTACT

Sponsorship manager in CAMELEON

+33 (0)1 43 22 35 92

Email : [parrainages@cameleon-association.org](mailto:parrainages@cameleon-association.org)





# SETTING-UP OF YOUR SPONSORSHIP STEP-BY-STEP

## STEP 1 SPONSORSHIP APPLICATION FORM

Fill out, sign, and send back the sponsorship registration form, which can be found at the end of this guide.



## STEP 2 SETTING UP FINANCIAL SPONSORSHIP



Sponsorship will be effective upon receiving your [annual subscription \(35 € per year\)](#) and the implementation of your contribution : [28, 44 or 56€ per month](#).

- ☒ Payments can be carried out monthly, quarterly, biannually or yearly.
- ☒ Due to accounting policy, please carry out your payment between the 5th and the 25th of every month and clearly mention your name in the subject of the transfer.
- ☒ Payment by standing order (IBAN – FR76 3000 4014 2800 0100 1161 709 – please make sure your wire transfer have been correctly implemented by your bank and keep us informed); or a cheque payable to the Association CAMELEON.

## STEP 3 YOUR SPONSORED CHILD'S FILE



Upon receiving your contribution, you will receive the file of your sponsored child including:

- ☒ The "intake sheet": a document written by the local staff to give you information about their civil status, family environment, school life, etc. This document is in English (official language in the Philippines)
- ☒ Pictures of the sponsored child

## CONTACT



To contact us, we prefer communication by email rather than post because it's free and quicker.

Please notify us if you change your address, otherwise you might not receive news from us and consequently of your sponsored child.





# FISCAL ADVANTAGES

## YOU BENEFIT FROM A TAX DEDUCTION

☑ 75% of the donated amount, and for all donations made out to CAMELEON Association up to 528€

☑ 66% of the donated amount beyond 528€ within the limit of 20% per year of taxable revenue.

For companies, the legislation provides a tax reduction of 60% of the amount of the donation, within the limit of 0.5% of turnover taxes. To this end, we send you every year, in March of the year following the donation, a fiscal receipt justifying your tax reduction.



### FOR EXAMPLE

If you donate 28 €/month which represents  $28 \times 12 = 336$  €/year, your tax reduction will be of 252 € [ $336 \times 75\% = 252$  €].

As a result, your sponsorship will only cost you 84 € a year (i.e. 7 €/month) after the 75% tax-deduction.

## SPONSORING WITH CONFIDENCE

CAMELEON is a recognised charity and supportive organisation.

Our accounts are audited and certified annually by auditors. Nos comptes sont audités et certifiés annuellement par un commissaire aux comptes. In addition, as part of its activity, CAMELEON is regularly checked by partners who fund projects in the Philippines.

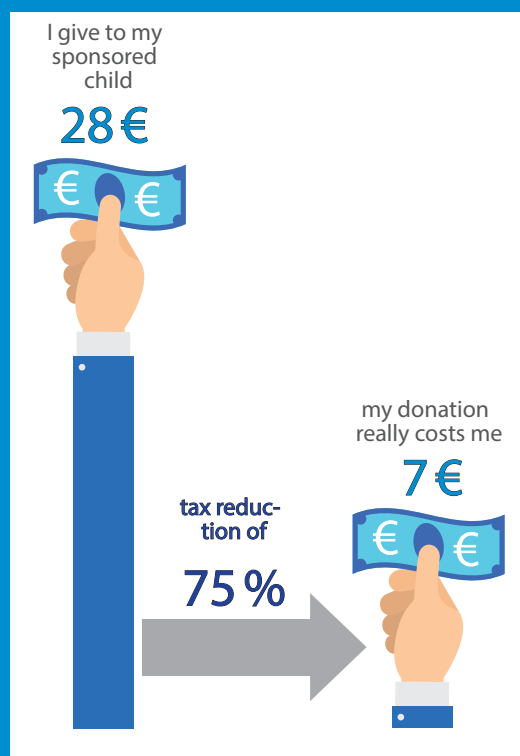
Some donors conduct field visits to CAMELEON to review the efficiency and management of funds, as well as the results and impact on project beneficiaries. These "audits" allow our donors to continue financing the association with full confidence. Since the creation of CAMELEON, many companies have supported us, such as the Luxemburg Ministry of Foreign Affairs, Clarins, Engie Foundation, France Foundation, Elle Foundation, Air France Foundation, and Lagardere Group.

80 %

Of your monthly donation is used to fund our programs.

20 %

Cover the cost of management and follow-ups.



# RELATIONSHIP WITH YOUR SPONSORED CHILD

Sponsoring through CAMELEON association implies the implementation of a sustained, regular relationship with your sponsored child. In addition to the exchange of letters, we are committed to provide you with the maximum amount of information so that you can follow their development.

## THE ANNUAL REPORT

After following the educational progress of your child and informing you of the overall development in their life and family (move onto to higher grade level, grades, teacher appreciation, attitude and behaviour, extracurricular activities, photos, etc.), the social workers write an individual report about every child at the end of the academic year ( end of March in the Philippines; starts at the beginning of June).

The report in English is communicated to you by email or by post in June-July (possibility of translation if you would prefer one)



## AD HOC REPORTS

To keep you informed of important life events of your child or difficulties they may be facing, an ad hoc report may be sent throughout the course of the year.

## PHOTOS OF YOUR SPONSORED CHILD

When we receive pictures of your child (birthdays, field volunteer missions, etc.) we send them to you by email or by post. CAMELEON association asks sponsors not to post photos or information of your child on the internet or social media, especially Facebook.

## CAN I BRING MY SPONSORED CHILD TO FRANCE?

A stay in France is not an option. The cultural gap between the two countries is too large and the culture shock, specifically over a short period of time, could do harm more than benefit.

In addition, in the Philippines, like in many developing countries, going to the West is the dream of many. For us, sponsorship is not an opportunity for them to leave their country.

This position is also taken by the local team and it corresponds to our ethics. It applies to all our beneficiaries.



# ACADEMIC EQUIVALENCES

## GRADE EQUIVALENCE

Grades in the Philippines				Performance	Notes en France
95 % -> 100 %	A	A	1.00	Exemplary	> 18 = Excellent
90 -> 94	A	A-	1.25 – 1.75	Very good	16 à 17 = Très Bien
85 -> 89	P	B+	2.00 – 2.50	Good	14 à 15 = Bien
80 -> 84	AP	B-	3.00	Average	12 à 13 = Moyen
75 -> 79	D	C	4.00	Poor	10 à 11 = Passable
< 75	B	F	5.00	Fail	< 10 = Échec

## CLASS EQUIVALENCE

From 6 to 11 ans	
Elementary School	École Élémentaire
Grade 1	CP
Grade 2	CE1
Grade 3	CE2
Grade 4	CM1
Grade 5	CM2
Grade 6	6 <sup>ème</sup>

From 12 to 16 ans	
Junior High School	Collège
Grade 7	5 <sup>ème</sup>
Grade 8	4 <sup>ème</sup>
Grade 9	3 <sup>ème</sup>
Grade 10	Seconde

From 17 to 18 ans	
Senior High School	Lycée
Grade 11	Première
Grade 12	Terminale

From 19 to 23 ans	
College	Université
First year	Première année
Second year	Deuxième année
Third year	Licence
Fourth year	Master 1 (Maîtrise)
Masteral	Master 2



# RELATIONS WITH YOUR SPONSOR CHILD

## EXCHANGING LETTERS

The exchange of letters is the principal vector of communication. The children place a lot of importance on these signs of affection. In CAMELEON, we give priority to the exchange of letters between sponsors and their child.

Through your letters and small forms of attention, your child will feel supported and encouraged by their "tito" and "tita" at the end of the day.

Throughout the year, your child will write to you to talk about their life, their school, their family, their friends, and what they feel in their heart.



## MAIL DELAY

You can write to them as many times as you prefer and send them drawings, post cards, pictures, etc.

The letters take between 5 to 8 weeks to arrive.

The communication passes through our local staff that records the exchange of letters between the children and their sponsors, which allows a regular and reliable follow up. The delays can sometimes be rather long: our teams in the Philippines and France work towards minimizing routing delays caused by hazards independent of our will as the location of the Philippines and the difficulty of accessing very remote villages where your child may sometimes live can cause these.

### POSTAGE PRICE

☑ For a letter of 20g, priority mail: 1.25 €

☑ For a letter of 50, priority mail: 2.50 €

Source : [www.laposte.fr](http://www.laposte.fr)

## MAIL ITINERARY



NB : Parcels follow the same process, but count to 1-3 months to arrive in the Philippines.



# 5 GUIDELINES FOR WRITING YOUR LETTERS

1. Do not give out contact information
2. If your child is in the "Rehabilitation" program, do not approach the topic of her trauma if she herself does not speak about it
3. Use sentences that are both short and simple in order to ensure your child understands all of it
4. Talk about your everyday life
5. Get involved in their life, pose questions about their family, their education, and their hobbies

## INSTRUCTIONS ON SENDING YOUR LETTERS

- ☑ The letter is mailed exclusively to the CAMELEON center, without mentioning the name of the child on the envelope:

CAMELEON Association  
Barangay Sablogon  
5037 Passi City (Iloilo)  
Philippines



**ATTENTION !**  
Messages must be in English.

- ☑ Write your address down on the back of the envelope.
- ☑ In the letter, write the name of your child as well as your name (but without any contact information) so that the social worker can identify who the letter is for and from...
- ☑ As a precaution, we ask you do not send post cards without envelopes, money, or collectible stamps
- ☑ Address your monetary gifts to CAMELEON France who will give it to your child.

Keep us informed of any contact information changes. If not, you risk not receiving all the letters of your child.

## INTERACT IN ENGLISH WITH YOUR CHILD

In order to fully understand the message of your child or to find proper words in English for your message, we recommend you to use the following sites:

- ☑ [www.wordreference.com](http://www.wordreference.com) or <http://dictionnaire.reverso.net/> :online dictionaries
- ☑ <http://www.linguee.fr/>: this site allows you to verify if the expression used in English or French is correct according to the context.

Do not hesitate to contact us about any problem concerning mail interaction. Our volunteer translators may assist you!



## DIRECTLY CONTACTING MY SPONSORED CHILD

Direct interactions by mail, email, phone or internet) are not allowed in order to protect each parties' privacy.

We prefer to keep you informed of the risks. There are some cases where the sponsors partake in solicitations; including financial, on behalf of their sponsored child and their families. The families find themselves in situations of hardship and struggle to make do. It is the reason for which the team of social workers systematically verify all communication and intervene when the requests seem excessive in order to avoid dependency.

However, the temptation could be great for families in difficult situations (illness of a family member could throw of the economic stability of the family for example) to turn to the sponsors, who appear as very wealthy.

CAMELEON Association cannot be held responsible for these potential variables and events that might transpire because of them.



# RELATIONSHIP WITH YOUR SPONSORED CHILD

## CONTACT THROUGH EMAIL

Sending emails is reserved for the 1st interaction at the start of a sponsorship with the goal of presenting oneself or in really exceptional cases (for example, if you live on a boat during a voyage with no fixed postal address).

With the internet connection being rather bad in the Philippines, it is difficult for the local staff to manage reception of emails. CAMELEON continues to place emphasis on postal letters so that your letters accompany and encourage the child not only through their studies but also in their personal development. It is through your correspondence that builds the emotional relationship with your sponsored child that gives a whole new meaning to sponsorship.

In these two unique situations, you can send an email directly to your child through the email address provided: [correspondance@cameleon-association.org](mailto:correspondance@cameleon-association.org).

## GUIDELINES FOR AN OPTIMAL TRANSMISSION THROUGH ELECTRONIC COMMUNICATION

1. Write your message in English
2. Write down your sponsored child's name and surname in the e-mail subject
3. Write down your name and last name at the end of the message
4. Do not add your personal details
5. Do not attach pictures (please send them by letter).

Photos can be too heavy and prevent good reception of your email to the Philippines.

# RELATIONSHIP WITH YOUR SPONSORED CHILD

## SENDING GIFTS

### SENDING A CASH GIFT TO YOUR CHILD THROUGH THE ASSOCIATION

If you want to send a gift to your sponsored child (for Christmas, their birthdays or another event), there are two possibilities:

The best solution is still sending a monetary gift. Giving a cash gift to the child you sponsor is a good option since prices in the Philippines are lower than in Europe and there is no shipping costs. You also participate in the development of the local economy and the child can choose for themselves. Be aware that the amount is included in the tax receipt we send you every year in March to justify your tax deduction.

#### ☒ By check

Payment by check preferably (payable to Association CAMELEON); please mention this donation is a gift for you sponsored child, write down their name and send it at the following address:

Association CAMELEON  
32 rue Robert Lindet  
75015 PARIS

#### ☒ By wire transfer

If you do not wish to send a check by mail, you could do a wire transfer by specifying in the title that it is a gift. At the same time, please notify us by email of your generous gift so that we may ensure its proper reception. Your gift can be wired to CAMELEON association's account :

RIB : 30004 01428 00010011617 09  
IBAN : FR76 3000 4014 2800 0100 1161 709  
BIC : BNPAFRPPCHL

### A MAXIMUM AMOUNT OF 30 €

Given the standards of living in the Philippines, we advise you to give a cash gift between 10 and 30 € maximum. This amount is enough to let your sponsored child buy a great gift. Be aware that it was voted in the General Assembly that donations to beneficiaries will be capped at 30 € and the difference will be considered a donation for the association. It was also voted on that 20% of the total donation amount will be reserved for the proper management of the gift by the teams in France and the Philippines.

### A LETTER & A PHOTO

We will confirm by email the proper reception of your monetary gift. Then, the association will notify the local staff of the available sum and a social worker will accompany your sponsored child to select their gift. Nous vous confirmerons par mail la bonne réception de votre don en argent. In the month following your gift, you will receive a letter on behalf of your child with a photo of the purchases made thanks to your gift.





## SENDING A PARCEL GIFT

More personal, this option allows you to send items you specifically chose for your sponsored child. Parcels are delivered within 1 or 3 months from France to the Philippines. The local staff records all exchanges of gifts between the children and their sponsors in order to get a liable and regular follow-up.

### ATTENTION

- ☒ Do not insert valuable items, jewelry or cash inside the parcel due to possible damage or robbery.
- ☒ Do not insert food in the parcel (Delivery often takes more than one month).
- ☒ As a precaution do not stick valuable stamps on your parcel.
- ☒ For better security during the mailing of your package, wrap it entirely in scotch tape to protect it during its trajectory.

### PRICES FOR MAILING A PACKAGE TO THE PHILIPPINES

- ☒ Colissimo international (weight: 1kg) : 27,65 €
- ☒ Colissimo international packaging (weight: 2kg): 2,50 €

Source : [www.laposte.fr](http://www.laposte.fr) (Rates effective January 2014)



## NEED SOME GIFT IDEAS?

### HERE ARE SOME SUGGESTIONS

Gift useful for their daily life: a plastic waterproof watch similar to a «Swatch», summer clothes (you can find the height and weight of your sponsored child in their APR), flashlight without battery (or solar flashlight), school supplies, umbrella...

☐ Gifts according to their taste and/or to express themselves: hair accessories, stationery items (no school notebook since notebook lines are different in the Philippines), books/comics in English, CDs (modern music), Photo albums, diary, costume jewelry or goodies.



## VISIT YOUR SPONSORED CHILD: TRAVEL TO THE PHILIPPINES

Sponsoring a child thousands of kilometers away can be frustrating. Through letters and reports you are able to see your sponsored child grow and mature without ever having met them. And then one day, you take the plunge, it's decided, you are going to visit your sponsored child! The Philippines is a distant and costly destination but if the occasion presents itself, be aware that you will be properly welcomed. The entire CAMELEON team as well as your child and their family will make sure to organize a stay filled with emotion!

You can travel to the Philippines whenever you want to visit your sponsored child. We advise you not to come during Christmas time because most of the local staff is on holiday and most of the children stay with their families.

Weekends are the best moment to meet your sponsored child since they will be more available to spend time with you. We suggest a stay no longer than 3 or 4 days. It will be the opportunity to share a lunch with your sponsored child and to meet her family, even to visit the school.

If you would like to extend your stay so as to volunteer for CAMELEON (10 days minimum), contact us!

### PLANNING YOUR STAY

If you wish to come to the Philippines to meet your child, you are invited to notify the Parisian office of the association several weeks prior in order to secure your trip will be in the best conditions. The center cannot guarantee to welcome you and to organize your visit without being informed at least 2 weeks before coming.

✘ **TOURISTIC VISA** : if your stay in the Philippines will be longer than 30 days, you'll need a visa (validity period is 59 days). Please contact the Philippine Embassy or visit the following website: <http://philembassyparis.com>, section "Consular service". Attention: the delay in obtaining a visa is around 15 days.

✘ **VACCINES** : You should have a booster dose of DT polio and a vaccine against typhoid. Some areas of the Philippines are affected by malaria so you must check the areas where you'll stay before leaving France in order to have an anti-malaria treatment if necessary. The region where CAMELEON is settled is not affected by malaria. Rabies and dengue are also present in the Philippines.

✘ **CLIMATE IN THE PHILIPPINES** : climate is warm, humid and tropical. The annual average of temperatures is around 26°C. There are three seasons in the Philippines: warm season, (summer) from March to May, rainy season from June to November and cold season from December to February.

✘ **WEBSITES TO CONSULT BEFORE YOUR DEPARTURE (FROM FRANCE)** :

[www.diplomatie.gouv.fr](http://www.diplomatie.gouv.fr) (information about the Philippines; consult section « Conseils aux voyageurs (in French only) / [www.pasteur.fr/sante](http://www.pasteur.fr/sante) (information about compulsory vaccines and health precautions to be taken)

AMBASSADE of France in the Philippines  
Pacific Star Building - 16th floor Buendia Avenue  
Corner Makati Avenue - Metro Manila Philippines  
Tél : (02) 810.19.91 / 00.63.2.810.19.91 depuis l'étranger

Ambassade of Philippines in France  
4 Hameau Boulainvilliers  
75016 Paris  
Tel : 01.44.14.57.00



## TRANSPORTATION

For your flight, we recommend: Emirates Air-lines, Qatar Airways, Cathay Pacific or KLM.

☒ To come from Manila to Iloilo, purchase your ticket online (Php 1500 to 2000 / 30 to 40 € promo price) : [www.cebupacificair.com](http://www.cebupacificair.com), [www.philippineairlines.com](http://www.philippineairlines.com) or [www.airphils.com](http://www.airphils.com).

☒ By boat and bus is cheaper but it takes longer (around 24 hours).

☒ Our driver can pick you up at the airport (for a fee of Php 600 -12€ for the gasoline). Also if you arrive by boat.

☒ If you travel by bus, it may stop at Passi bus station (2 kilometers away from CAMELEON center), our CAMELEON driver could pick you up at Passi bus station (no fees).

☒ Please make sure to keep us informed if your flight is delayed or has been cancelled so the driver is informed in time.

> (00 63) 033 311 55 75 (office) > and (00 63) 0977 802 53 32 (cell phone of the Director of CAMELEON Philippines Sabine CLAUDIO).

## HOUSING

☒ You are welcome to stay at a nearby hotel or at the CAMELEON center. Housing and meals at the center cost 400 Php (8 €) per day.

## MEET WITH YOUR SPONSORED CHILD

☒ A staff member will be with you when you meet your sponsored child to ease communication.

☒ Sponsors must be authorised by the local staff to go somewhere with their sponsored child (mall, park, restaurant, etc.). The child and the sponsor will always be accompanied by a staff member.

☒ Do not give cash or personal information (address, email, etc.) to your sponsored child in order to maintain an earnest and not money-based relationship.

If you have any questions regarding your behavior, do's and don'ts, what to offer or not, feel free to ask the local staff who will be happy to help you.

# RELATION AVEC VOTRE FILLEUL(E)

## A WEEK IN CAMELEON CENTER

	MONDAY TO FRIDAY
4:30	Wake-up and prayer
5:00	Breakfast
6:00	Chores School Shuttle
7:00	School
11:30	Lunch at the Center
12:00	Chores
13:00	School
17:00	Free Time
18:00	Prayer time Dinner Preparation
19:00	Dinner
20:00	Homework, TV on Friday
21:30	Sleep

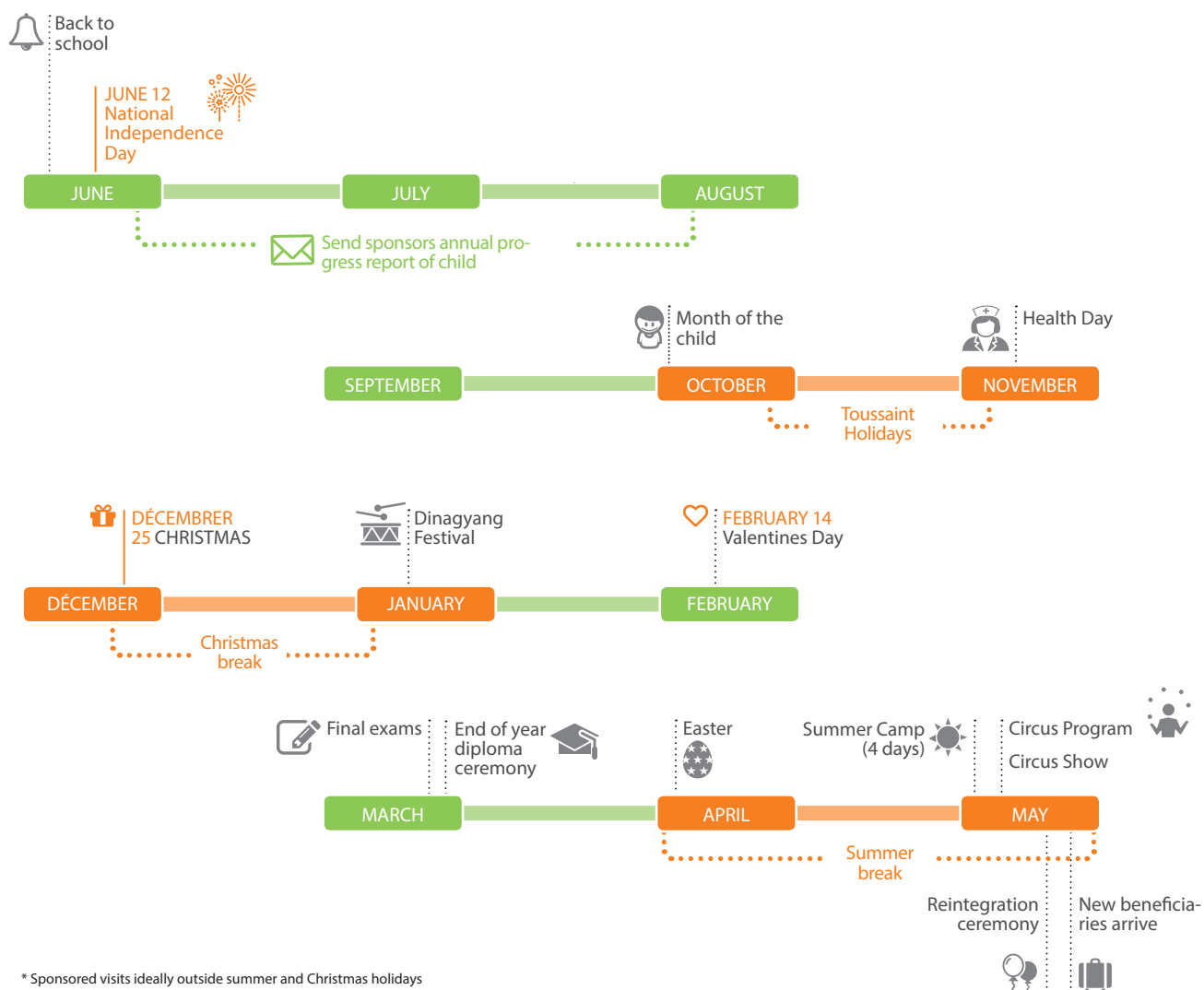
	SATURDAY	SUNDAY
5:30	Wake up and prayer	
6:00	Breakfast preparation	
6:30	Breakfast	
7:30	Check-up with the child therapist	General cleaning and storage
8:30	Workshops apprenticeship, Group Therapy Individual Therapy	Workshops (sports, apprenticeship, circus)
11:30	Lunch	
12:00	Rest/Nap	
13:30	Workshops (sports, apprenticeship, circus)	Mass Free time ( games, sports, lectures)
17:00	Linen Care and Ironing Prayer Time	
18:00	Dinner Preparation	
19:00	Dinner	
20:00	TV or vigil	Homeworks
21:30		Sleep
22:00	Coucher	







## IMPORTANT DATES OF THE YEAR FOR THE CHILDREN\*



## SPONSOR QUOTES



“ My link to me is Faith, what a promising name, and indicative of the hope she carries within her! Each one of her messages is a ray of sun, always filled with love and gratitude, but it's me who thanks her for being in my life, shower me with sweet words and make me so important. My sponsorship experience is all these emotions at the same time.

Delphine, , sponsor since 2010

“ Elvie Rose entered our lives a little more than 8 years ago. At the beginning, for me, sponsorship was to above all help financially support (in our little way) CAMELEON Association. We were very moved in receiving the first photo and letter from Elvie. Through the years, an individual bond formed: we never met her but I have an enormous amount of affection for Elvie Rose. Through her letters, we feel a great strength and a great joy for life. Watching her succeed in life despite all the obstacles that she has overcome, it's an honor...

Martine, sponsor since 2010





“ After 3 years of writing to and sharing pictures with Wilfred, I had the chance and honor of meeting him at his diploma ceremony at the end of March in 2015. This moment was filled with emotion, we fell into each other's arms. What pride for his mother and for me to be able to help this event that is the pinnacle of sponsorship and to see him fly with his own wings. We both decided to keep in touch to prolong this beautiful relationship that we formed throughout the years.  
Laure, sponsor since 2012

“ I have been the sponsor of Cheny for 9 years now. We exchange letters regularly and I am very proud of her because, despite all difficulties, Cheny is preparing for her diploma. In giving, 28€ every month, you allow a child to go to school, do their studies or be trained in a business...”

Virginie Guilhaume, TV host and  
CAMELEON Ambassador



# CHILD TESTIMONIALS

“ As a student, I have many apprehensions. My sponsor reassures me a lot, she's a source of inspiration and motivation for me. She encourages me all the time, she cheers me up and reminds me to be positive in life. And above all she tells me that she will always be at my side and that she will provide me with help in anything I could need. That is why, sometimes, I am afraid she will be disappointed if I don't pass my classes. She has been helping me for a long time, I owe it to her. Sometimes, I imagine staying at the CAMELEON center forever, it's my whole life. It is thanks to the association and my sponsor that I am here today. Despite the distance, she comes to my side and gives me love. Meeting her one day is among my dearest wishes. I would like to thank her for these incredible 14 years during which she has always padded me on the back. It is a great opportunity for me to have her in my life, truly! I very much wish to meet her with the goal of personally saying thank you to her. Writing a thank you letter is not enough. It is still better, according to me, to thank a person face to face.

I would like for all people who need help to have a refuge and I know that there is a number of children in the Philippines that search for a better life.

I constantly ask the people around me to help the poor even if helping is a big responsibility. However, helping is also knowing that you do it one step at a time and it's good to be conscious of that.

That is why I work a lot and I invested a lot in CAMELEON as a beneficiary in order to make the most of the opportunity given to me.



Ana Maria, 21 years old, sponsored child since age 14

Green Joy, 13 years old,  
sponsored child since age 7





# THE END OF YOUR SPONSORSHIP

## IF YOU WISH TO END YOUR SPONSORSHIP...

Thank you to let us know as soon as possible to give us a sufficient amount of time to find another sponsor for your sponsored child. Then, you will have to take contact with your bank to stop automatic payments.

We ask you to write a letter to your sponsored child to let him/her know about your decision. It is very important that he/she could understand that the sponsorship is not over because of him/her.

### COMMENT

You do not want to sponsor anymore but you want to continue to support the association, simply keep your transfers which will be considered as a donation for the benefit of CAMELEON's actions.

## ... OR YOUR SPONSORSHIP NATURALLY COMES TO AN END



One day, your sponsored child will be independent : he/she will graduate, find a job and will not need your support anymore. That will be the end of a beautiful story. However, you will still have the possibility to sponsor another child if you choose to (1).

Sometimes the sponsorship comes to an end even if your child has not graduated or found a job (2). This step is as painful for you as it is for us. We will inform you about it and you will have the possibility to sponsor another child (1).

In any case, you will receive by e-mail or by mail a closing report in order to officialize the end of your sponsorship. This report includes the following documents:

"Closing Summary Report": This file is written by the local staff in charge of your sponsored child. It includes a summary of their school life and their current situation. Pictures of their graduation day along with their school report card if he/she finished their studies.

### 1 END OF SCHOOLING / GRADUATION

We would be happy to keep in touch with you through another sponsorship. This renewal is formalized through sending you a sponsorship form to fill out and return it to us signed. Concerning your wire transfers, you have two options:

- ☒ Maintaining your transfers while waiting for a new child. The amount will be transferred in the CAMELEON solidarity fund (used for exceptional fees regarding health (surgery, hospital fees) or schooling (internship fees, school trip) of children who benefit from sponsorship.
- ☒ Suspending your transfers until you are attributed a new child.

### 2 SCHOOL DIFFICULTIES:

In exceptional cases, CAMELEON may need to stop a sponsorship earlier than planned. When a child is not serious, does not attend school regularly or does not take into account our warnings, they will be terminated from the program. It also may occur that the child decides to end his studies on his own accord.

# THE END OF YOUR SPONSORSHIP

## EXCHANGE WITH YOUR SPONSORED CHILD ONCE THE SPONSORSHIP IS OVER

We understand the importance of the bond that is created between you and your child and we do not wish for it be broken suddenly. Despite everything, CAMELEON association cannot guarantee mail interactions after your child has left the program.

You can now communicate directly with them. If you wish and on your request, we send your contact information (mail, email, Facebook) to your child so that they may contact you. But we will not be able to give you their postal information (a majority of families do not have an “official” address). Email addresses are rarely used in the Philippines, the primary form of communication with your child remains Facebook, very popular among the young people.

We prefer to keep you informed of the risks. There are some cases where the sponsors partake in solicitations;



including financial, on behalf of their sponsored child and their families. The families find themselves in situations of hardship and struggle to make do. It is the reason for which the team of social workers systematically verify all communication and intervene when the requests seem excessive in order to avoid dependency

However, the temptation could be great for families in difficult situations (illness of a family member could throw off the economic stability of the family for example) to turn to the sponsors, who appear as very wealthy.

CAMELEON Association cannot be held responsible for these potential variables and events that might transpire because of them.



## SENDING OF A LAST GIFT TO CONGRATULATE YOUR DEGREED SPONSORED CHILD



If you wish, you could send one last gift to your child through the association to congratulate them on acquiring their diploma. Because it is a very important time in their life, it is possible to give them more than 30€ (within a reasonable limit).

However, after this last gift, as for postal letters, the association will no longer assume an intermediary role.



# YOU HAVE MORE QUESTIONS ?

## WHAT IS A SPONSORSHIP?

## WHAT IS A SPONSOR?

A sponsorship, and therefore a sponsor, is the financial and moral support of a child, your sponsored child that allows them to continue an education. At CAMELEON, sponsorship is individual, the follow-up is personal and regular. Sponsorship is solidified by an exchange of letters (in English): letters, post cards, photos, drawings, gifts and through the sending of reports prepared by the local staff. The sponsors of sponsored children through CAMELEON contribute to support their education up until the obtention of a diploma or a professional certificate. The moral support and the encouragements that forms sponsors create a strong and personal bond, essential for the development of the child.



In every instance,  
if you have questions,  
do not hesitate to contact  
the Sponsorship Manager on +33 1 43 22 35 92



## MAY I CHOOSE WHICH CHILD TO SPONSOR?

Future sponsors fill out a form where they can choose the gender of the child (boy or girl). They can also express a preference for a specific age or program. CAMELEON tries to respect these wishes, to the extent of the needs in the Philippines. Once the financial sponsorship is in place, our team member in charge of sponsorships will send a packet to the new sponsors.

## IS MY CHILD SPONSORED BY OTHER SPONSORS?

Usually, CAMELEON attributes one sponsor to a child. In the cases of young female victims of sexual abuse, it might be possible that two or three people sponsor the same to better cover the costs related to their support, which is more understandable: psychological or psychiatric support, legal aid in addition to educational, medical check-ups, etc.



# SPONSORSHIP FORM

I wish to sponsor : ☐ a girl ☐ a boy ☐ unimportant

I choose my monthly payments :

☐ 28 euros / month  
so 336 euros/year\*

☐ 44 euros / month  
so 528 euros/year\*

☐ 56 euros / month  
so 672 euros/year\*

\*You benefit from a tax deduction of 75% of the amount of your donations, sponsorships and contributions (66% above € 528) and receive a receipt

I choose the mode and periodicity of the payment :

☐ Check

☐ Direct debit\*\*

☐ Annual ☐ Bi-annual

☐ Monthly ☐ Bi-annual ☐ Annual

\*\* For accounting reasons, please make your transfer between the 5th and 25th of the month. The RIB of the association will be sent to the reception of this document.

All sponsors must be members :

☐ I join my membership (35€ per year) Payment preferably by check payable to CAMELEON association

My details :

Last name : ..... First name : .....

Address : .....

ZIP Code : ..... City : .....

Phone : .....

Email : .....

Date : .....

Signature :

## By check

Thank you for drawing up your check to the following order  
« Association CAMELEON » and send it to : ASSOCIATION CAME-  
LEON FRANCE, 32 rue Robert Lindet, 75015 Paris, France

## By direct debit RIB : 30004

01428 00010011617 09

IBAN : FR76 3000 4014 2800 0100 1161 709

BIC : BNPAFRPPCHL



YOU ARE COMMITTED TO OUR SIDE TO CONTRIBUTE TO A CHILD'S  
FUTURE. FROM THE BOTTOM OF OUR HEARTS, WE THANK YOU!



# YOU HAVE QUESTIONS ?

## WHO CAN BE A SPONSOR ?

Everyone can become a sponsor. The important thing is to want to invest yourself in this relationship, if possible in the long term to care for the child until the end of his higher education.

## AM I INFORMED ABOUT THE PROGRAM TO WHICH MY / MY SPONSORED CHILD BELONGS?

Yes, the sponsor receives as a first document a file that tells the story and profile of the child. Then he will follow his process and his progress by receiving an annual report on his schooling, his extra activities school, health, family and social relations and possible difficulties.

## MY SPONSORSHIP HAS ENDED, CAN I SPONSOR THE BROTHER OR SISTER OF MY / MY GODCHILD?

No. One child per family benefits from sponsorship in order to help more families. CAMELEON relies on young graduates who have jobs to help their parents finance the studies of their brothers and sisters.

## WHAT IS THE PORTION OF SPONSORSHIP IN THE OPERATION OF THE ASSOCIATION?

The association works largely thanks to the sponsors whose financial contribution makes up more than a third of our budget. 80% of the funds are allocated directly to the needs of the child, 20% allow to pay the salary of the supervising staff (social assistants, surrogate mothers) as well as the management fees of the sponsorship and the exchanges of letters.



# ACTING FOR CHILDREN IN THE PHILIPPINES